

LEAK LOCATOR

OBJECTIVE

Leak Locator supports the operator in coordination of emergency response actions e.g:

- > Reduction of leak quantity
- > Containment of the spill area
- > Evacuation

to reduce consequences of a leak.

SOLUTION

Pipeline Manager Leak Locator provides an interface (e.g. via IP21 or PI) for collection of information from a process control (SCADA) system (e.g. LEO: Leckerkennung und -ortung) and the visualisation of this information in Pipeline Manager.

Incoming alarms are registered and following checking by the operator may be dismissed as false alarms or as registered as leak alarms. A registered alarm initiates an automatic notification with the data from the alarm and a map, which can be transmitted to the emergency contact (e.g. fire brigade). The operator can select alarms and choose to display them graphically in Pipeline Manager.

All information is displayed in a geographic context which means that the operator can immediately contact the correct emergency service(s), can see which emergency equipment is available where, and has all further information necessary for an effective and efficient emergency response.

Automatic protocolling of alarm activities provides historical documentation that may be required later (e.g. for regulators).

If indications of spill volume and related information are available, these can be linked to the alarm and be displayed by the engineer sub-module for Leak Locator.

BENEFITS

Fastest possible reaction in case of emergency leading to:

- > Limiting spill volume and affected area (containment)
- > Effective protection of human population and environment (Evacuation)
- > Efficient use of resources
- > Documentation of all results of alarm processing

INTERFACES

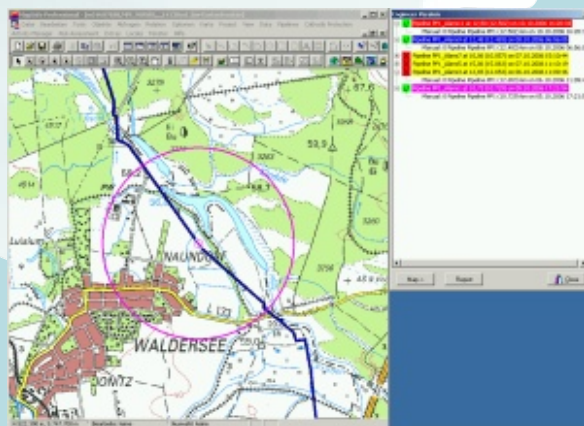
- > Interface to SCADA via IP21 or PI
- > Leak Locator is a Client Server Tool

OPERATING SYSTEM

- > Windows (2000, 2003, XP, Vista)

SYSTEM REQUIREMENTS

- > Pipeline Manager Professional 5.x or higher



- > Red circle – open alarm,
- > Green circle – dismissed alarm, or
- > Magenta circle – registered leak alarm

