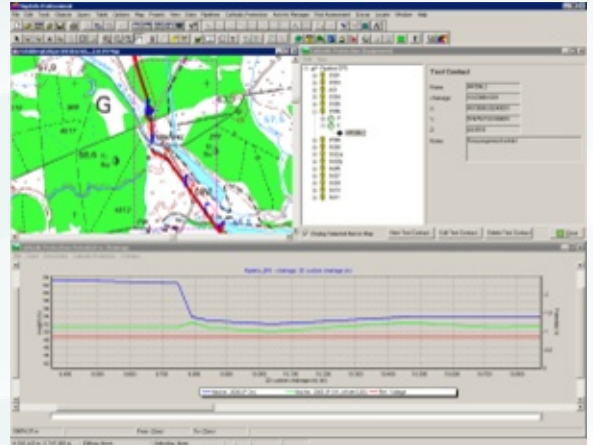


CATHODIC PROTECTION (CP)

OBJECTIVE

Cathodic protection protects steel pipelines from corrosion and therefore extends the operating life of the pipeline. DMC1's Cathodic Protection (CP) module supports the operator in the analysis of CP data and provides access to information about the CP system to the pipeline. In addition, it offers the opportunity to display and analyse CP survey data in a geographic context. Thus, the operator can recognise potential threats to the pipeline earlier and more easily.



SOLUTION

CP provides an overview of the effectiveness of the CP system, by comparison with the reference voltage. Compatibility with other pipeline data (e.g. from pig runs) ensures rapid localisation of critical areas. Data from CIPS surveys can also easily be imported and integrated into the analysis. Historical trend analysis of readings allows the user to investigate changes over time for areas of the pipeline and determine any required maintenance actions.

The CP module supports the following graphical and geographic displays:

- > Potential versus chainage with a linked map as geographic context
- > Historic data (trend) for one or more user selected CP points
- > Administration of CP equipment
- > The chart display is linked to a map window that automatically repositions itself in response to navigation along the chart and vice versa. Thus, the context for the map and the chart are always compatible.

All survey data are available in both chart and tabular form.

The CP module supports the following equipment data for the CP system, which can be flexibly defined:

- > Data for test points
- > Data for test leads such as
 - >> Potential test leads, pipe test leads
 - >> Transformer/rectifier,
 - >> Ground beds, earth pieces and isolation pieces, etc.

Test lead types determine which measurements are possible for the individual test lead/point.

BENEFITS

- > Simple administration and rapid access to CP data for the pipeline
- > Evaluation of CP data in historical context
- > Analysis of pipeline condition via comparison of CP data with other pipeline data

INTERFACES

- > WinTrans interface for import of nmd-files
- > Import of dbf-files for CIPS surveys

OPERATING SYSTEM

- > Windows (2000, 2003, XP, Vista)

SYSTEM REQUIREMENTS

- > Pipeline Manager Professional 5.x or higher

