

## ACTIVITY MANAGER (AM)

### OBJECTIVE

Third party activities are a common cause of damage to pipelines. The monitoring of these activities has a high priority in order to reduce the risk of damage.

AM helps the operator avoid damage to the pipeline through management of these construction or other activities of third parties.

### SOLUTION

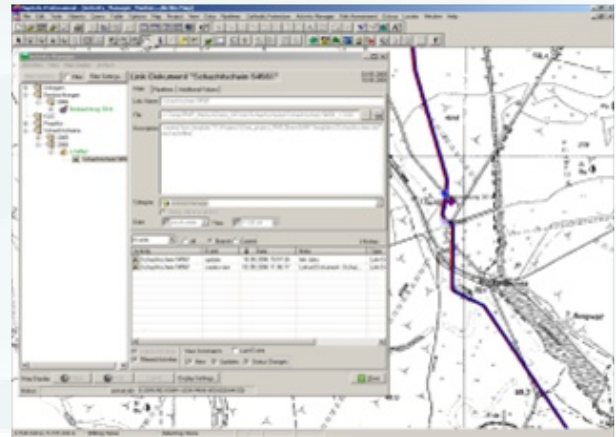
By using a system that covers the entire spectrum of tasks related to 3rd party activities (requests, observations, permits etc) along with the related correspondence and history, the operator is at all times able to determine the status of any activity. Work flows can be modelled in AM, allowing permitting processes to be efficient and to improve internal and external communications. AM also allows key information to be easily available in the field, e.g. during aerial surveillance.

Activity Manager allows the capture for the following information:

- > Registration of 3rd party activities as
  - >> Observations from inspections and aerial surveillance (optionally through use of PM/ PDA Observer)
  - >> Requests from construction and regional plans
  - >> Permits for registered construction activities
- > Automatic generation and registration of documents relating to activities and import of documents from field observations
- > Registration of the geographic position of activities
- > Optional linked photographs of activity sites

### BENEFITS

- > Reduced effort for information capture and monitoring of 3rd party activities
- > Optimised analysis of results from field and flight observations
- > Traceability of evidence e.g. for regulators
- > Effective planning and monitoring of necessary maintenance and surveillance tasks
- > Optimised resource usage
- > Up to date information on the pipeline and activities



### INTERFACES

- > Open XML-interface
- > PDA Observer interface for integration from wayleave checks
- > PM Observer interface for integration of flight observations

### OPERATING SYSTEM

- > Windows (2000, 2003, XP, Vista)

### SYSTEM REQUIREMENTS

- > Pipeline Manager Professional 5.x or higher